

# Service manual Minimat 43 S

**Version: 2.00**

**Ident:**

**Series:**

**Part-Number: X1000**

**This part can be ordered.**

## Chapter

baking chamber, Minimatt 43 S 230V 50Hz - V:  
control unit, Minimatt 43 S 230V 50Hz - V:  
door, Minimatt 43 S 230V 50Hz - V:  
frame, Minimatt 43 S 230V 50Hz - V:  
installation room, Minimatt 43 S 230V 50Hz - V:



**PLATON SERVICE**

8 (800) 500-34-47

[www.platonservice.com](http://www.platonservice.com)

# Service manual baking chamber, Minimat 43 S 230V 50Hz

**Version:**

**Ident:**

**Series:**

**Part-Number:**

## Chapter

X1000-300-005 - heater recirculating, Minimat 43 S 230V 50Hz - V:

X1100-011-000 - oven assembled, Minimat 43 S 230V 50Hz - V:

tray runners - V:



**PLATON SERVICE**

8 (800) 500-34-47

[www.platonservice.com](http://www.platonservice.com)

# Service manual heater recirculating, Minimat 43 S 230V 50Hz

**Version:**

**Ident:**

**Series:**

**Part-Number: X1000-300-005**



## Chapter

- 00525 - distance sleeve 15 mm
- 106921 - holder isolation
- 107163 - female connector 5-pole
- 109859 - multi pin connector 5-pole
- 110352 - ventilation cover dotted
- 110753 - washer d= 10,5
- 111126 - hex nut M6 DIN 934
- 111127 - hexagonal nut M5
- 111485 - heater support
- 33568 - hexagon nut
- 34485 - seal holder motor shaft
- 34625 - seal heater
- 36314 - fan wheel
- 36321 - seal motor shaft, graphit
- 38134 - heater 3000 W
- 42105 - screw
- 42210 - washer
- 42330 - washer
- 42674 - screw
- 9020-110-004 - fan motor Min43 with 2 rotation speeds
- 9030-436-003 - capacitor motor 42655
- 9030-436-004 - capacitor motor 42698

**Part: distance sleeve 15 mm**

Part-Number: 00525

**Part: holder isolation**

Part-Number: 106921

**Part: female connector 5-pole**

Part-Number: 107163

**Part: multi pin connector 5-pole**

Part-Number: 109859

**Part: ventilation cover dotted**

Part-Number: 110352

**Part: washer d= 10,5**

Part-Number: 110753

**Part: hex nut M6 DIN 934**

Part-Number: 111126

**Part: hexagonal nut M5**

Part-Number: 111127

**Part: heater support**

Part-Number: 111485

**Part: hexagon nut**

Part-Number: 33568

**Part: seal holder motor shaft**

Part-Number: 34485





## Part: seal heater

**Part-Number: 34625**

When replacing the ring heater the seal must be replaced as well.



---

## Part: fan wheel

**Part-Number: 36314**

The manufacturer tested the fan wheel for imbalance. Keep away any direct heat from the fan wheel for e.g. Blow lamps, otherwise the wheel will not run smoothly. An imbalance of the wheel will damage the motor and yield unsatisfactory baking results. The fan wheel is attached to the motor shaft and a fan wheel removal device must be used when replacing it. At any sign of imbalance the fan wheel must be replaced to prevent further damage.



---

## Part: seal motor shaft, graphit

**Part-Number: 36321**

The motor shaft seal is a clean lead and seal against moisture at the back of the oven which could lead to disturbances. Therefore the following must be observed: Tighten the sealing plate after the motor is fastened, change seal after every removal of the motor.



## Part: heater 3000 W

**Part-Number: 38134**

The ring heater is attached by the securing loops on the welded bolts on the oven wall with the nuts. The heater flange is secured with hexagonal screws. The ring heater can be replaced. When replacing the ring heater the seal must be also be replaced. Work with thread free hexagonal screws to prevent damage that may be caused by heat.



## Part: screw

**Part-Number: 42105**



## Part: washer

**Part-Number: 42210**



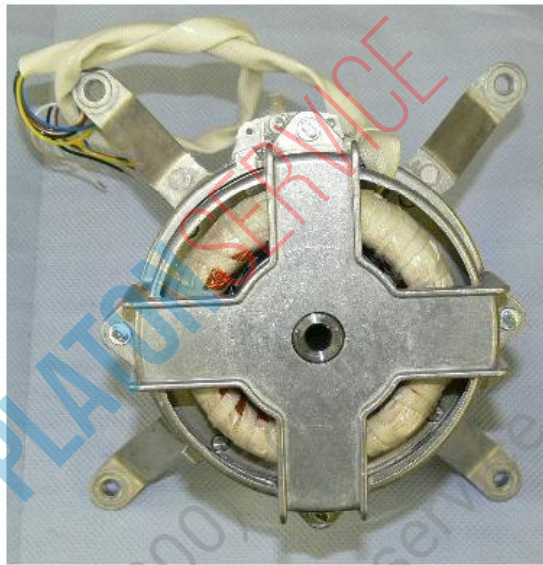
## Part: washer

**Part-Number: 42330**



**Part: screw****Part-Number: 42674**

---

**Part: fan motor Min43 with 2 rotation speeds****Part-Number: 9020-110-004**

---

**Part: capacitor motor 42655****Part-Number: 9030-436-003**

---

**Part: capacitor motor 42698****Part-Number: 9030-436-004**

---



# Service manual oven assembled, Minimat 43 S 230V 50Hz

**Version:**

**Ident:**

**Series:**

**Part-Number: X1100-011-000**

## Chapter

06035 - tray runners Minimat

08628 - thermostat tube

107923 - thermocouple plug

107924 - thermocouple tube

111706 - hangers left 3 plates MINIMAT1/Minimat 43 S

111707 - hangers right 3 plates MINIMAT1/Minimat 43 S

37981 - capillary tube regulator

38337 - door seal MINIMAT

9030-140-005 - thermocouple



**PLATON SERVICE**

8 (800) 500-34-41

[www.platonservice.com](http://www.platonservice.com)

**Part: tray runners Minimat**

Part-Number: 06035

**Part: thermostat tube**

Part-Number: 08628

**Part: thermocouple plug**

Part-Number: 107923

**Part: thermocouple tube**

Part-Number: 107924

**Part: hangers left 3 plates MINIMAT1/Minimat 43 S**

Part-Number: 111706

**Part: hangers right 3 plates MINIMAT1/Minimat 43 S**

Part-Number: 111707

## Part: capillary tube regulator

**Part-Number: 37981**

The thermostat measures the oven temperature. The fluid in the capillary tube measures the temperature. Be sure not to kink the capillary tube when placing it the result will be a false reading or interruption. Insulate the capillary tube on critical spots ( e.g. circuit board) with silicone hose article number 40074.



---

## Part: door seal MINIMAT

**Part-Number: 38337**

The door seal is glued with transparent heat resistant silicone on the radii, on the edges and on the long stretches. Should this be exchanged the old seal must be removed with the help of a knife. Clean the tracks and remove all silicone remains. Ensure when installing that the seal is completely in the frame. Order the door seal as cut ware. Instructions for installation and length of door seal can be found in the assembly instructions.



**Part: thermocouple**

**Part-Number: 9030-140-005**



**PLATON SERVICE**

8 (800) 500-34-47

[www.platonservice.com](http://www.platonservice.com)

# Service manual tray runners

**Version:**

**Ident:**

**Series:**

**Part-Number:**

## Chapter

111706 - hangers left 3 plates MINIMAT1/Minimat 43 S  
111707 - hangers right 3 plates MINIMAT1/Minimat 43 S



**PLATON SERVICE**

8 (800) 500-34-47

[www.platonservice.com](http://www.platonservice.com)



**Part: hangers left 3 plates MINIMAT1/Minimat 43 S**

**Part-Number: 111706**

---

**Part: hangers right 3 plates MINIMAT1/Minimat 43 S**

**Part-Number: 111707**

---



**PLATON SERVICE**

8 (800) 500-34-47

[www.platonservice.com](http://www.platonservice.com)

# Service manual control unit, Minimat 43 S 230V 50Hz

**Version:**

**Ident:**

**Series:**

**Part-Number:**

## Chapter

X1000-301-010 - control panel classic assembled, Minimat 43 S 230V 50Hz - V:

X1000-355-000 - control panel comfort assembled, Minimat 43 S 230V 50Hz - V:

X1200-355-026 - slider classic assembled, Minimat 43 S 230V 50Hz - V:

X1200-355-027 - slider comfort assembled, Minimat 43 S 230V 50Hz - V:



**PLATON SERVICE**

8 (800) 500-34-41

[www.platonservice.com](http://www.platonservice.com)

# Service manual

## control panel classic assembled, Minimat 43 S 230V 50Hz

**Version:**

**Ident:**

**Series:**

**Part-Number: X1000-301-010**

### Chapter

107216 - glass sign Lux yellow WB 90  
110239 - carrier thermostat  
110855 - silicone hose  
34862 - knob thermostat  
35148 - signal lamp with clip  
36691 - knob timer  
400342 - safety limit switch  
400771 - illuminated key attachment adapter  
400772 - illuminated key LED 230 V  
400773 - illuminated key closing contact  
401082 - illuminated key  
401083 - illuminated notch (ON / OFF)  
40316 - lens flange head screw  
421017 - clock timer 60 minutes  
70355 - safety limit switch  
9030-325-001 - illuminated push-button black  
9030-325-002 - button lens flat, "ON" "OFF"  
9030-325-003 - button lens flat, steaming  
9030-325-004 - button lens flat, fan speed  
X1000-355-017 - cover classic tank  
X1000-355-018 - cover classic



PLATON SERVICE

8 (800) 500-34-41

www.platonservice.com

**Part: glass sign Lux yellow WB 90****Part-Number: 107216**

---

**Part: carrier thermostat****Part-Number: 110239**

---

**Part: silicone hose****Part-Number: 110855****Part: knob thermostat****Part-Number: 34862**

Please note when ordering: Thermostat dial and timer dial have different connectors and are not compatible



## Part: signal lamp with clip

Part-Number: 35148



---

## Part: knob timer

Part-Number: 36691

Please note when ordering: Thermostat dial and timer dial have different connectors and are not compatible



---

## Part: safety limit switch

Part-Number: 400342

The thermostat knob regulates the post running of the fan to prevent the electrical components from overheating.





## Part: illuminated key attachment adapter

Part-Number: 400771



---

## Part: illuminated key LED 230 V

Part-Number: 400772

LED only with manual version as well as IS400 version with water tank.



---

## Part: illuminated key closing contact

Part-Number: 400773

By locking the switch the contactor tightens and the normally open contact closes the inductor circuit as long as the power is supplied.



---

## Part: illuminated key

Part-Number: 401082

The illuminated key does not click in. It only functions as long as it is pressed e.g. steaming



## Part: illuminated notch (ON / OFF)

**Part-Number: 401083**

The illuminated key clicks in when in use. To deactivate the key it must be pressed. For example on/off



## Part: lens flange head screw

**Part-Number: 40316**



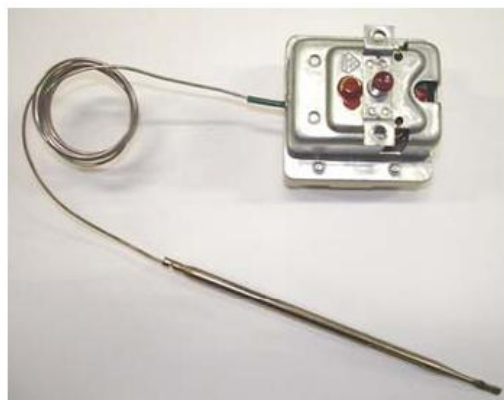
## Part: clock timer 60 minutes

**Part-Number: 421017**

## Part: safety limit switch

**Part-Number: 70355**

The temperature safety limit switch (STB) is the overheating protection for the baking chamber. It is activated at a temperature of 360°C. The heater connector switches off and the appliance quits working. Once the oven cools down the STB can be manually reset. The measurement occurs from the fluid in the capillary tube. Ensure when placing the capillary tube that it does not kink. The result is false readings or interruption. Insulate the capillary tube on the critical spots (e.g. circuit board) with silicone hose article number 40074.



**Part: illuminated push-button black**

Part-Number: 9030-325-001

**Part: button lense flat, "ON" "OFF"**

Part-Number: 9030-325-002

**Part: button lense flat, steaming**

Part-Number: 9030-325-003

**Part: button lense flat, fan speed**

Part-Number: 9030-325-004

**Part: cover classic tank**

Part-Number: X1000-355-017



**Part: cover classic**

**Part-Number: X1000-355-018**



# Service manual

## control panel comfort assembled, Minimat 43 S 230V 50Hz

**Version:**

**Ident:**

**Series:**

**Part-Number: X1000-355-000**

### Chapter

107695 - blade terminal, double 6,3  
110239 - carrier thermostat  
110855 - silicone hose  
70355 - safety limit switch  
9030-320-007 - Comfort Minimat  
X1000-355-065 - cover comfort-tank, glued  
X1000-355-066 - cover comfort, glued  
X1200-355-029 - seal  
X1200-355-116 - cover control  
X1200-355-117 - fastener USB



**PLATON SERVICE**

8 (800) 500-34-47

[www.platonservice.com](http://www.platonservice.com)



**Part: blade terminal, double 6,3****Part-Number: 107695****Part: carrier thermostat****Part-Number: 110239****Part: silicone hose****Part-Number: 110855**

**PLATON SERVICE**  
8 (800) 500-34-47  
www.platonservice.com

## Part: safety limit switch

**Part-Number: 70355**

The temperature safety limit switch (STB) is the overheating protection for the baking chamber. It is activated at a temperature of 360°C. The heater connector switches off and the appliance quits working. Once the oven cools down the STB can be manually reset. The measurement occurs from the fluid in the capillary tube. Ensure when placing the capillary tube that it does not kink. The result is false readings or interruption. Insulate the capillary tube on the critical spots (e.g. circuit board) with silicone hose article number 40074.



---

## Part: Comfort Minimat

**Part-Number: 9030-320-007**



---

## Part: cover comfort-tank, glued

**Part-Number: X1000-355-065**

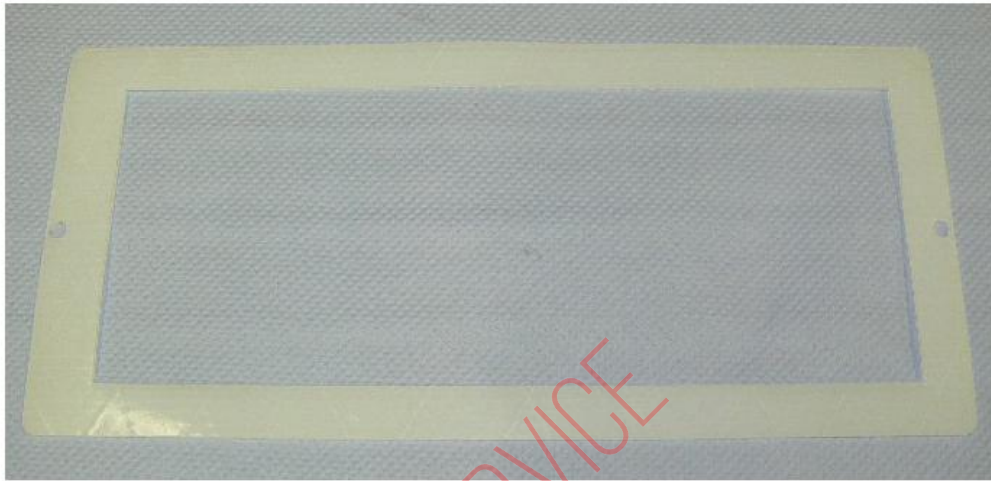


---

## Part: cover comfort, glued

**Part-Number: X1000-355-066**

---

**Part: seal****Part-Number: X1200-355-029****Part: cover control****Part-Number: X1200-355-116****Part: fastener USB****Part-Number: X1200-355-117**

**PLATON SERVICE**  
8 (800) 500-34-47  
[www.platonservice.com](http://www.platonservice.com)

# Service manual

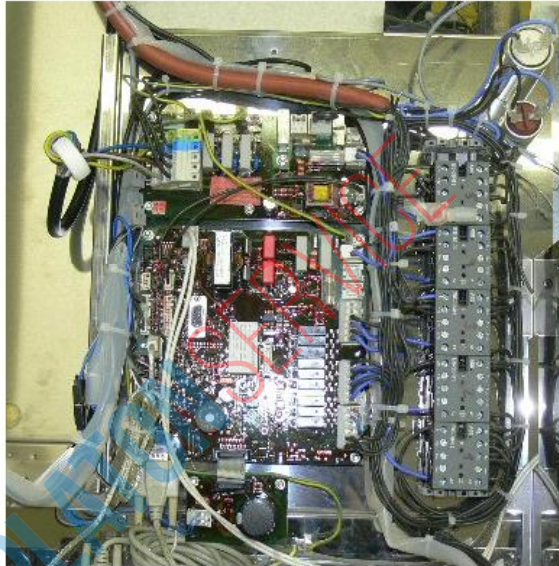
## slider classic assembled, Minimat 43 S 230V 50Hz

**Version:**

**Ident:**

**Series:**

**Part-Number: X1200-355-026**



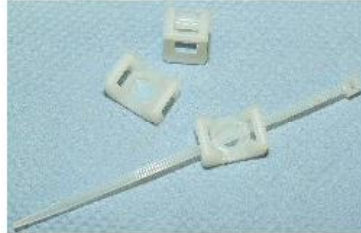
### Chapter

- 107082 - fastening element for cable clip 6mm
- 109042 - bearing rail l=225
- 109905 - through terminal, blue 2,5m
- 109906 - PE- terminal
- 111338 - holder for wire harness
- 111343 - cross bridge iso. red 24 A 4/0
- 111344 - continuation clamp gray 2,5qmm
- 111345 - cable with plug for axial fan
- 33884 - relay main switch
- 34100 - transformer
- 36058 - buzzer
- 36304 - cam switch
- 404810 - end clamp grey
- 404814 - intermediate plate clamp
- 9030-430-040 - cable set Minimat classic
- X1200-355-028 - slide Minimat



**Part: fastening element for cable clip 6mm**

Part-Number: 107082

**Part: bearing rail l=225**

Part-Number: 109042

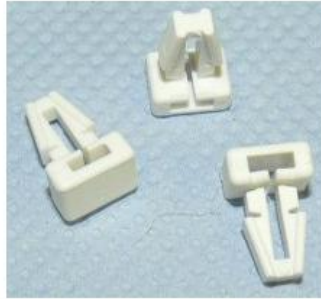
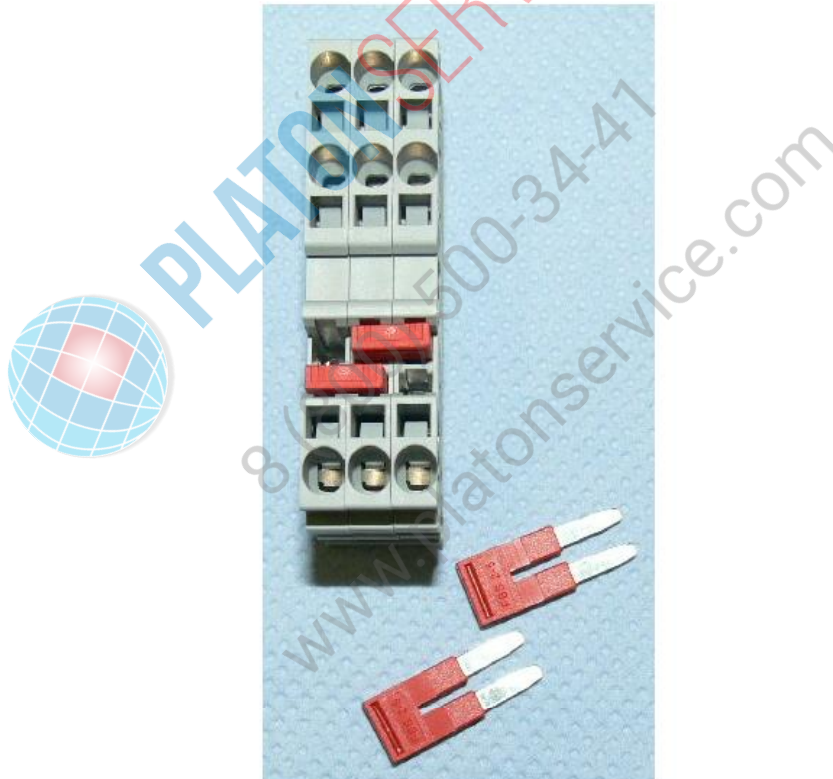
**Part: through terminal, blue 2,5m**

Part-Number: 109905

**Part: PE- terminal**

Part-Number: 109906



**Part: holder for wire harness****Part-Number: 111338****Part: cross bridge iso. red 24 A 4/0****Part-Number: 111343**



**Part: continuation clamp gray 2,5qmm****Part-Number: 111344****Part: cable with plug for axial fan****Part-Number: 111345****Part: relay main switch****Part-Number: 33884**

The contactor switches the heater on/off.



## Part: transformer

Part-Number: 34100



---

## Part: buzzer

Part-Number: 36058

An acoustic signal is given at the end of the timer. ( Buzzer 230 V )



---

## Part: cam switch

Part-Number: 36304

The cam switch is a timed controlled direction changer of the fanwheel and controls the turning contactor.



**Part: end clamp grey****Part-Number: 404810****Part: intermediate plate clamp****Part-Number: 404814****Part: cable set Minimat classic****Part-Number: 9030-430-040**

**Part: slide Minimat**

**Part-Number: X1200-355-028**

---



**PLATON SERVICE**

8 (800) 500-34-47

[www.platonservice.com](http://www.platonservice.com)



# Service manual

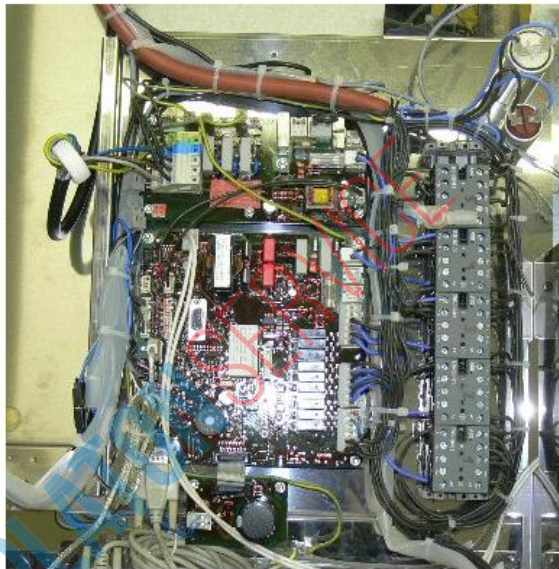
## slider comfort assembled, Minimat 43 S 230V 50Hz

**Version:**

**Ident:**

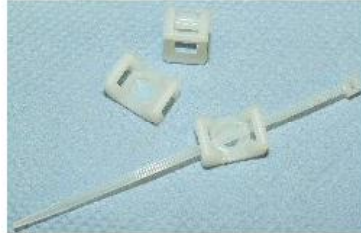
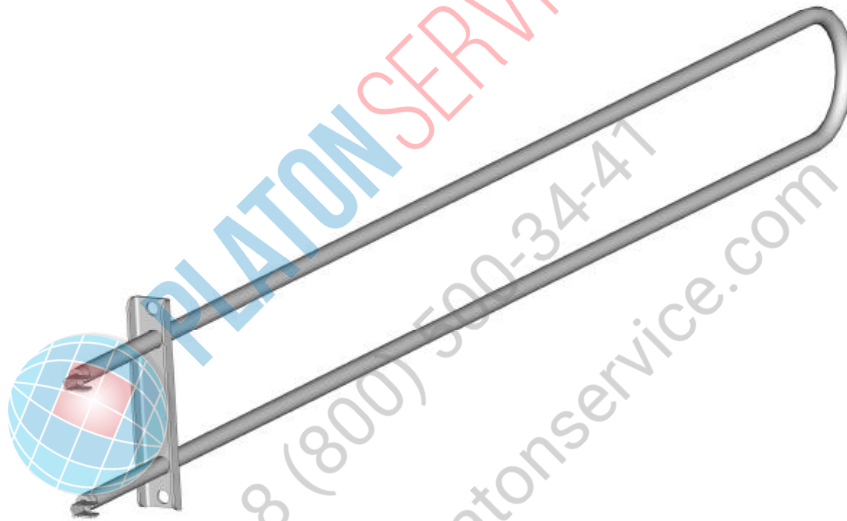
**Series:**

**Part-Number: X1200-355-027**



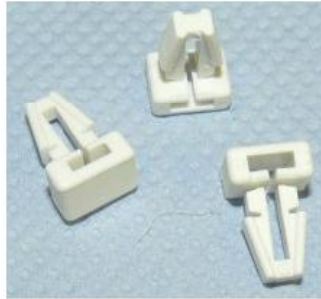
### Chapter

- 107082 - fastening element for cable clip 6mm
- 107159 - female multipoint connector 2 pole
- 107161 - female multipoint connector 3 pole
- 107657 - spacer for circuit boards
- 109042 - bearing rail l=225
- 109904 - end clamp grey
- 111231 - spacer
- 111338 - holder for wire harness
- 111339 - cable clip 102x2,5mm
- 111345 - cable with plug for axial fan
- 33884 - relay main switch
- 9030-330-001 - motherboard universal
- 9030-330-003 - terminal board active
- 9030-330-004 - additional board hoppo Minimat
- 9030-430-037 - data cable control Comfort-Classic
- 9030-430-041 - cable set Minimat comfort
- 9030-430-113 - USB-extension cord
- X1200-355-028 - slide Minimat

**Part: fastening element for cable clip 6mm****Part-Number: 107082****Part: female multipoint connector 2 pole****Part-Number: 107159****Part: female multipoint connector 3 pole****Part-Number: 107161**



**Part: spacer for circuit boards****Part-Number: 107657****Part: bearing rail I=225****Part-Number: 109042****Part: end clamp grey****Part-Number: 109904****Part: spacer****Part-Number: 111231**

**Part: holder for wire harness****Part-Number: 111338****Part: cable clip 102x2,5mm****Part-Number: 111339****Part: cable with plug for axial fan****Part-Number: 111345**

## Part: relay main switch

**Part-Number: 33884**

The contactor switches the heater on/off.



---

## Part: motherboard universal

**Part-Number: 9030-330-001**



---

## Part: terminal board active

**Part-Number: 9030-330-003**



**Part: additional board hoppo Minimat****Part-Number: 9030-330-004****Part: data cable control Comfort-Classic****Part-Number: 9030-430-037****Part: cable set Minimat comfort****Part-Number: 9030-430-041**

**Part: USB-extension cord**

**Part-Number: 9030-430-113**



**Part: slide Minimat**

**Part-Number: X1200-355-028**



**PLATON SERVICE**

8 (800) 500-34-47

[www.platonservice.com](http://www.platonservice.com)



# Service manual door, Minimat 43 S 230V 50Hz

**Version:**

**Ident:**

**Series:**

**Part-Number:**

## Chapter

X1000-450-001 - door assembled, Minimat 43 S 230V 50Hz - V:

X1200-400-021 - door latch electrical left, Minimat 43 S 230V 50Hz - V:

X1200-400-020 - door latch electrical right, Minimat 43 S 230V 50Hz - V:

door latch mechanical, Minimat 43 S 230V 50Hz - V:



**PLATON SERVICE**

8 (800) 500-34-41

[www.platonservice.com](http://www.platonservice.com)



# Service manual

## door assembled, Minimat 43 S 230V 50Hz

**Version:**

**Ident:**

**Series:**

**Part-Number: X1000-450-001**

### Chapter

08504 - MINIMAT1 drain gutter  
100171 - silicone underlay Minimat door  
110074 - glass fiber cable siflex SIS/GL  
110900 - hose heat shrinkable  
111805 - sealing pane  
111808 - sealing pane glued MIN1, Minimat 43 S  
33042 - porcelain clamp 2-pole 10A  
33427 - halogen lamp 12V 20W  
33891 - halogen socket  
36050 - DU bushing  
37502 - rubber foot silicone  
39092 - blind plug, door MINIMAT  
9000-199-003 - screw thread furrow  
9040-110-001 - double ball catch  
9040-150-001 - handle Minimat  
X1000-400-010 - right door Min 43 S complete  
X1000-400-011 - left door Min 43 S complete



**PLATON SERVICE**

8 (800) 500-34-47

[www.platonservice.com](http://www.platonservice.com)

## Part: MINIMAT1 drain gutter

**Part-Number: 08504**

Condensation, which is reflected in the glass window of the Minimat will be collected in the gutter, and evaporated. Recommend to the customer during the manual cleaning the gutter clean with a damp cloth.



---

## Part: silicone underlay Minimat door

**Part-Number: 100171**

---

## Part: glass fiber cable siflex SIS/GL

**Part-Number: 110074**



---

## Part: hose heat shrinkable

**Part-Number: 110900**

---

**Part: sealing pane****Part-Number: 111805****Part: sealing pane glued MIN1, Minimat 43 S****Part-Number: 111808****Part: porcelain clamp 2-pole 10A****Part-Number: 33042**

Check the porcelain lamp holders and cables for damage. Please do not squeeze or kink the cable.

**Part: halogen lamp 12V 20W****Part-Number: 33427**

## Part: halogen socket

**Part-Number: 33891**

Check the porcelain lamp holders and cables for damage. Please do not squeeze or kink the cable.



## Part: DU bushing

**Part-Number: 36050**



## Part: rubber foot silicone

**Part-Number: 37502**

The separator between the sealing pane and the viewing pane ensures that it will not bend. This ensures that even in extreme conditions for example when steaming that the Minimat door remains sealed



## Part: blind plug, door MINIMAT

**Part-Number: 39092**



## Part: screw thread furrow

**Part-Number: 9000-199-003**

**Part: double ball catch****Part-Number: 9040-110-001****Part: handle Minimat****Part-Number: 9040-150-001****Part: right door Min 43 S complete****Part-Number: X1000-400-010****Part: left door Min 43 S complete****Part-Number: X1000-400-011**



# Service manual

## door latch electrical left, Minimat 43 S 230V 50Hz

**Version:**

**Ident:**

**Series:**

**Part-Number: X1200-400-021**

### Chapter

06505 - Door stop  
106006 - block holder left  
107634 - closing sheet left / door hinge right  
107650 - emergency opening door Minimat  
109294 - lens flange head screw 4x10  
110855 - silicone hose  
36195 - electrical magnetic closure (IS)  
36198 - door latch, electrical  
37722 - ring D10xD18  
42004 - screw M4x6  
9030-330-004 - additional board hoppo Minimat



**PLATON SERVICE**

8 (800) 500-34-41

[www.platonservice.com](http://www.platonservice.com)



**Part: Door stop**

**Part-Number: 06505**



**Part: block holder left**

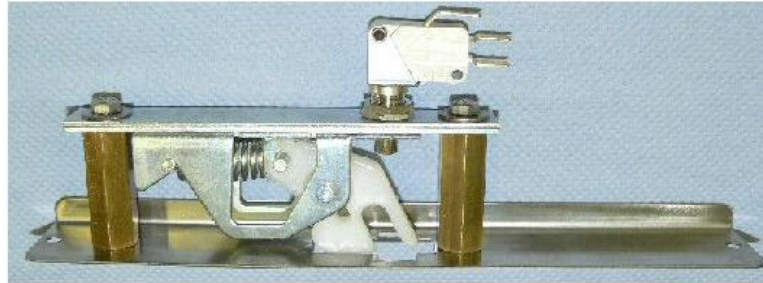
**Part-Number: 106006**



**Part: closing sheet left / door hinge right**

**Part-Number: 107634**



**Part: emergency opening door Minimat****Part-Number: 107650****Part: lens flange head screw 4x10****Part-Number: 109294****Part: silicone hose****Part-Number: 110855****Part: electrical magnetic closure (IS)****Part-Number: 36195**

## Part: door latch, electrical

**Part-Number: 36198**

The door block is fastened with 2 hexagonal screws M5 (wrench size 8) By loosening the screws the door blocks can be optimally adjusted. Tighten the screws once set. Secure the screws with Loctite 243 Article Number 61905.



---

## Part: ring D10xD18

**Part-Number: 37722**

---

## Part: screw M4x6

**Part-Number: 42004**

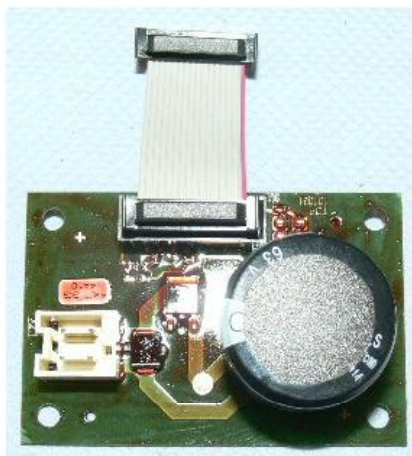


PLATON SERVICE  
8 (800) 500-34-47  
www.platonservice.com

---

## Part: additional board hoppo Minimat

**Part-Number: 9030-330-004**



# Service manual

## door latch electrical right, Minimat 43 S 230V 50Hz

**Version:**

**Ident:**

**Series:**

**Part-Number: X1200-400-020**

### Chapter

00000797 - holding plate  
106006 - block holder left  
107635 - closing sheet right / door hinge left  
107650 - emergency opening door Minimat  
110855 - silicone hose  
36195 - electrical magnetic closure (IS)  
36198 - door latch, electrical  
9030-330-004 - additional board hoppo Minimat



**PLATON SERVICE**

8 (800) 500-34-41

[www.platonservice.com](http://www.platonservice.com)

**Part: holding plate**

Part-Number: 00000797



**Part: block holder left**

Part-Number: 106006

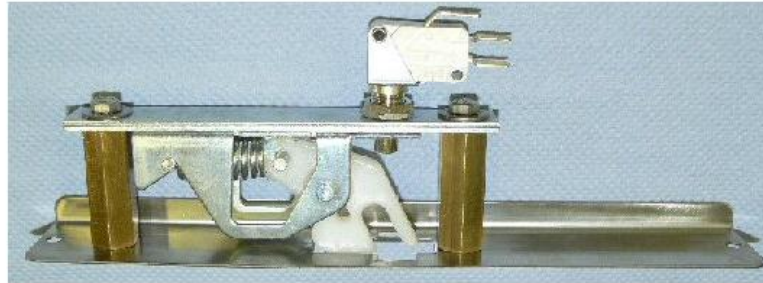


**Part: closing sheet right / door hinge left**

Part-Number: 107635





**Part: emergency opening door Minimat****Part-Number: 107650****Part: silicone hose****Part-Number: 110855****Part: electrical magnetic closure (IS)****Part-Number: 36195**

## Part: door latch, electrical

**Part-Number: 36198**

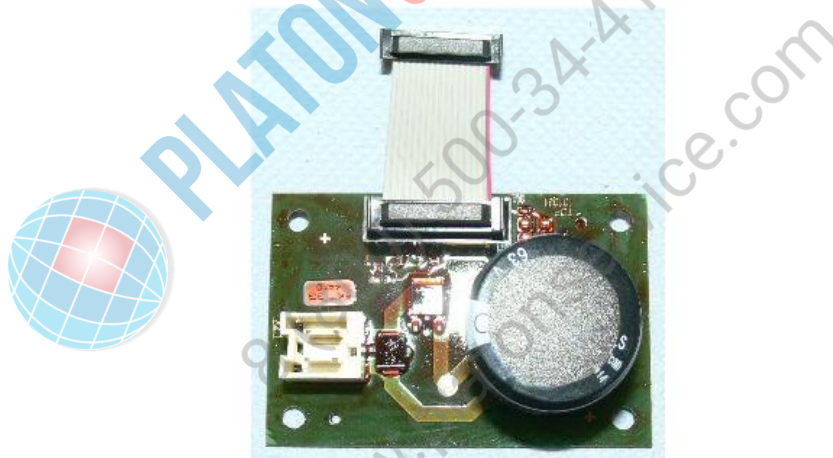
The door block is fastened with 2 hexagonal screws M5 (wrench size 8) By loosening the screws the door blocks can be optimally adjusted. Tighten the screws once set. Secure the screws with Loctite 243 Article Number 61905.



---

## Part: additional board hoppo Minimat

**Part-Number: 9030-330-004**



# Service manual

## door latch mechanical, Minimat 43 S 230V 50Hz

**Version:**

**Ident:**

**Series:**

**Part-Number:**

### Chapter

00000797 - holding plate  
106006 - block holder left  
107571 - spacers  
111692 - mechanical door latch right MIN 1  
111693 - mechanical door latch left MIN 1  
400141 - contact switch door (MAN)  
400542 - door latch, mechanical  
400600 - mechanical closing sheet, MINIMAT left  
400973 - mechanical closing sheet, MINIMAT right  
401635 - latch MIN1



**PLATON SERVICE**

8 (800) 500-34-41

[www.platonservice.com](http://www.platonservice.com)

**Part: holding plate****Part-Number: 00000797****Part: block holder left****Part-Number: 106006****Part: spacers****Part-Number: 107571****Part: mechanical door latch right MIN 1****Part-Number: 111692****Part: mechanical door latch left MIN 1****Part-Number: 111693**

## Part: contact switch door (MAN)

Part-Number: 400141



---

## Part: door latch, mechanical

Part-Number: 400542

The door block is fastened with 2 hexagonal screws M5 (wrench size 8) By loosening the screws the door blocks can be optimally adjusted. Tighten the screws once set. Secure the screws with Loctite 243 Article Number 61905.



---

## Part: mechanical closing sheet, MINIMAT left

Part-Number: 400600





**Part: mechanical closing sheet, MINIMAT right**

**Part-Number: 400973**



---

**Part: latch MIN1**

**Part-Number: 401635**



PLATON SERVICE  
8 (800) 500-64-47  
www.platonservice.com

**Service manual  
frame, Minimat 43 S 230V 50Hz**

**Version:**

**Ident:**

**Series:**

**Part-Number:**

**Chapter**

X1000-100-000 - frame assembled, Minimat 43 S 230V 50Hz - V:



**PLATON SERVICE**

8 (800) 500-34-41

[www.platonservice.com](http://www.platonservice.com)

# Service manual frame assembled, Minimat 43 S 230V 50Hz

**Version:**

**Ident:**

**Series:**

**Part-Number: X1000-100-000**

## Chapter

106454 - earth sign Ø 12,5  
109030 - stiffening plate Minimat 1/2  
111338 - holder for wire harness  
111474 - foot welded  
111478 - rear panel  
33040 - strain relief  
33973 - axial fan cover  
36219 - cover cap, plug  
36833 - foot cover cap  
40003 - silicone seal door  
401606 - axial blower



**PLATON SERVICE**

8 (800) 500-34-47

[www.platonservice.com](http://www.platonservice.com)

**Part: earth sign Ø 12,5**

**Part-Number: 106454**

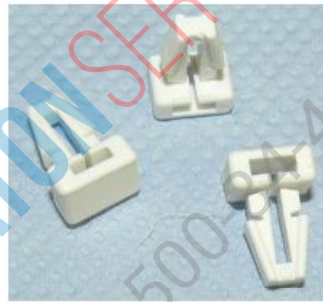


**Part: stiffening plate Minimat 1/2**

**Part-Number: 109030**

**Part: holder for wire harness**

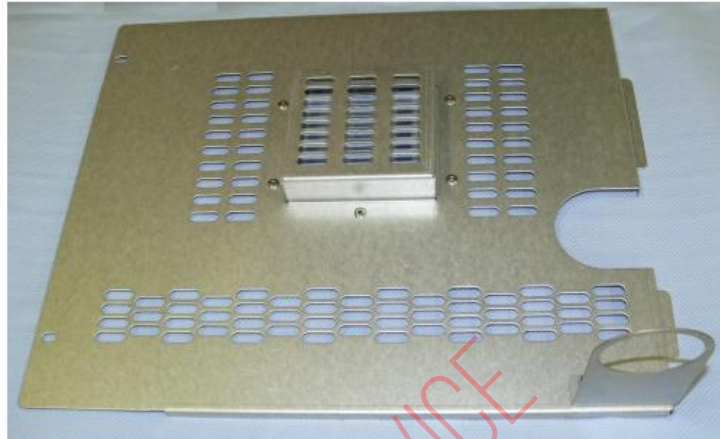
**Part-Number: 111338**



**Part: foot welded**

**Part-Number: 111474**



**Part: rear panel****Part-Number: 111478****Part: strain relief****Part-Number: 33040****Part: axial fan cover****Part-Number: 33973**

To avoid injury the axial fan cover must be installed correctly.





## Part: cover cap, plug

Part-Number: 36219

Plug for holes in the side wall.



## Part: foot cover cap

Part-Number: 36833



## Part: silicone seal door

Part-Number: 40003



## Part: axial blower

Part-Number: 401606



# Service manual installation room, Minimat 43 S 230V 50Hz

**Version:**

**Ident:**

**Series:**

**Part-Number:**

## Chapter

X1200-200-021 - fixed water connection comfort control, Minimat 43 S 230V 50Hz - V:

111844 - fixed water connection manual control, Minimat 43 S 230V 50Hz - V:

X1200-200-011 - tank connection, Minimat 43 S 230V 50Hz - V:



**PLATON SERVICE**

8 (800) 500-34-41

[www.platonservice.com](http://www.platonservice.com)

## **Servicemanual**

### **fixed water connection comfort control, Minimat 43 S 230V 50Hz**

**Version:**

**Ident:**

**Series:**

**Part-Number: X1200-200-021**

#### **Chapter**

107920 - straight male 10/8  
33377 - double nipple Ms  
403753 - solenoid valve  
40485 - teflon hose  
9060-115-001 - extansion -inside  
9060-510-001 - flow meter



**PLATON SERVICE**

8 (800) 500-34-47

[www.platonservice.com](http://www.platonservice.com)

**Part: straight male 10/8****Part-Number: 107920****Part: double nipple Ms****Part-Number: 33377****Part: solenoid valve****Part-Number: 403753**

It is necessary to clean the dirt sieve of the solenoid valve regularly. Particles in the water line will stick to the sieve and interrupt the water flow. Please note the maximum water pressure and other warnings from the data sheets regarding the water connection. The solenoid valve works with a flow pressure of 150 - 600 kPa. You can test the solenoid valve function in the PC - Tool - Test. Attention the test is a continued test and this function is not protected from overload.

**Part: teflon hose****Part-Number: 40485**

**Part: extansion -inside**

**Part-Number: 9060-115-001**



---

**Part: flow meter**

**Part-Number: 9060-510-001**



**PLATON SERVICE**  
8 (800) 500-34-41  
[www.platonservice.com](http://www.platonservice.com)



## Service manual

### fixed water connection manual control, Minimat 43 S 230V 50Hz

**Version:**

**Ident:**

**Series:**

**Part-Number: 111844**

#### Chapter

109002 - bolting angle 10/8

25306 - connection cable safety plug 230V

403753 - solenoid valve

40485 - teflon hose

45559 - pair of tray runners MIN1



**PLATON SERVICE**

8 (800) 500-34-41

[www.platonservice.com](http://www.platonservice.com)

**Part: bolting angle 10/8****Part-Number: 109002**

---

**Part: connection cable safety plug 230V****Part-Number: 25306****Part: solenoid valve****Part-Number: 403753**

It is necessary to clean the dirt sieve of the solenoid valve regularly. Particles in the water line will stick to the sieve and interrupt the water flow. Please note the maximum water pressure and other warnings from the data sheets regarding the water connection. The solenoid valve works with a flow pressure of 150 - 600 kPa. You can test the solenoid valve function in the PC - Tool - Test. Attention the test is a continued test and this function is not protected from overload.

**Part: teflon hose****Part-Number: 40485**

**Part: pair of tray runners MIN1**

**Part-Number: 45559**



**PLATON SERVICE**  
8 (800) 500-34-47  
[www.platonservice.com](http://www.platonservice.com)

# Service manual

## tank connection, Minimat 43 S 230V 50Hz

**Version:**

**Ident:**

**Series:**

**Part-Number: X1200-200-011**

### Chapter

100495 - tank lid Minimat  
100496 - tank  
100515 - plug nipple tank  
100529 - float switch  
106224 - pump holder Minimat manual  
107921 - fitting angle 10/8  
111490 - holding plate Minimat  
33355 - Bushing  
33377 - double nipple Ms  
34555 - silicone hose  
37882 - level sensor connection  
38513 - pump  
40485 - teflon hose  
42237 - hose clamp 12-22/9A1  
9010-810-003 - magnetic lock  
9060-115-001 - extension -inside  
9060-510-001 - flow meter  
E 100502 - quick connect tank  
X1200-355-054 - stiffening plate



**PLATON SERVICE**

8 (800) 500-34-41

[www.platonservice.com](http://www.platonservice.com)

**Part: tank lid Minimat****Part-Number: 100495****Part: tank****Part-Number: 100496****Part: plug nipple tank****Part-Number: 100515****Part: float switch****Part-Number: 100529**

The level sensor controls the filling level of the tank. A signal is given when the remaining contents are at 10%.





**Part: pump holder Minimat manual**Part-Number: 106224

---

**Part: fitting angle 10/8**Part-Number: 107921

---

**Part: holding plate Minimat**Part-Number: 111490

---

**Part: Bushing**Part-Number: 33355

---

**Part: double nipple Ms**Part-Number: 33377

---



**Part: silicone hose****Part-Number: 34555****Part: level sensor connection****Part-Number: 37882****Part: pump****Part-Number: 38513**

In mobile appliances with a tank the pump for the steamer is 230 V controlled. It puts the required amount of spray pressure in the oven.



**Part: teflon hose**

Part-Number: 40485

**Part: hose clamp 12-22/9A1**

Part-Number: 42237

**Part: magnetic lock**

Part-Number: 9010-810-003

**Part: extension -inside**

Part-Number: 9060-115-001



**Part: flow meter****Part-Number: 9060-510-001****Part: quick connect tank****Part-Number: E 100502**

In order to avoid a snap in into the quick connector the metal clips have been removed

**Part: stiffening plate****Part-Number: X1200-355-054**

## Urheberrecht:

Das Urheberrecht an diesem Servicehandbuch verbleibt bei der WIESHEU GmbH. Dieses Servicehandbuch ist nur für autorisierte Servicepartner und dessen Personal bestimmt. Sie enthält Vorschriften und Hinweise, die weder vollständig noch teilweise vervielfältigt, verbreitet oder anderweitig mitgeteilt werden dürfen.

Alle Darstellungen, Zeichnungen, Bilder Texte und Angaben sind urheberrechtlich geschützt. Sie unterliegen den gewerblichen Schutzrechten.

## Zu diesem Servicehandbuch:

Alle Abbildungen in diesem Dokument sollen die Verständlichkeit unterstützen. Die Abbildungen sind nicht maßstabsgerecht. Teilweise sind dem Originalprodukt ähnelnde Abbildungen dargestellt, die geringfügig abweichen können.

## Achtung!

Vermeiden Sie Fehlfunktionen oder Beschädigungen durch falsche Ersatzteile. Wir empfehlen die ausschließliche Verwendung von WIESHEU-Original-Ersatzteilen.

**Wiesheu GmbH**  
**Daimlerstrasse 10**  
**DE-71563 Affalterbach**  
**Telefon: +49 (0)7144 / 3 03-0**  
**Fax: +49 (0)7144 / 3 03-11**  
**Service-Telefon: 0800-WIESHEU**  
**E-Mail: [info@wiesheu.de](mailto:info@wiesheu.de)**  
**[www.wiesheu.de](http://www.wiesheu.de)**

Stand: 10/24/2012



PLATON SERVICE

8 (800) 500-34-47

[www.platonservice.com](http://www.platonservice.com)